



**IESNA  
SUSTAINING  
MEMBER**



<b>Test Report Number:</b>	<b>LCZP14070094</b>	Total Pages: 7
<b>Applicant Name:</b>	L-TECH CORPORATION	
<b>Applicant Address:</b>	SHAOGANGTOU DISTRICT, QIAOTOU TOWN, DONGGUAN CITY, GUANGDONG PROVINCE, CHINA	
<b>Test item:</b>	LED Downlight	
<b>Model / Type Reference:</b>	LRKT565-9050	
<b>Date of Issue:</b>	2014-08-18	
<b>Testing Laboratory:</b>	LCTECH (Zhongshan) Testing Service Co.,Ltd 2/F., Technology and Enterprise Development Center, Guangyuan Road, Xiaolan, Zhongshan, Guangdong, China	
<b>Test Specification:</b>	Photometric test (According to IES LM-79-08)	
<b>Test Result:</b>	See following pages	
<b>Compiled by:</b>	<b>Reviewed by:</b>	
2014-08-18	Lin Qiu	
2014-08-18	Richard Li	
_____	_____	_____
Date	Name	Signature
Date	Name	Signature
<b>Remark:</b>	N/A	
<p>The duplication of this report or parts of it and its use for advertising purposes is only allowed with permission of the testing laboratory. This report contains the result of the examination of the product sample submitted by the applicant. A general statement concerning the quality of the products from the series manufacture cannot be derived therefore.</p>		



**DESCRIPTION INFORMATION (From Photometric File)**

IESNA:LM-63-1995  
[TEST] LCZP14070094  
[TESTLAB] LCTECH  
[DATE] 2014-8-15  
[MANUFAC] L-TECH CORPORATION  
[LUMCAT] LRKT565-9050  
[LUMINAIRE] LED Downlight  
[LAMPCAT] LED  
[LAMP] LED  
[OTHER] ELECTRICAL VALUES:120.09VAC 0.103A 12.28W 0.993

**CHARACTERISTICS**

Total Luminaire Lumens	1015.58
Luminaire Efficacy	83
Total Luminaire Watts	12
CIE Type	Direct
Spacing Criteria (0-180)	1.18
Spacing Criteria (90-270)	1.20
Spacing Criteria (Diagonal)	1.30
Basic Luminous Shape	Circular
Luminous Length (0-180)	0.08 m (Diameter)
Luminous Width (90-270)	0.08 m (Diameter)
Luminous Height	0.00 m

**LUMINANCE DATA (cd/sq.m)**

Angle In Degrees	Average 0-Deg	Average 45-Deg	Average 90-Deg
45	71308	71634	72172
55	61946	62259	62883
65	50310	50780	51117
75	36298	36541	36759
85	15601	15769	15769



**CANDELA TABULATION**



	<u>0</u>	<u>15</u>	<u>30</u>	<u>45</u>	<u>60</u>	<u>75</u>	<u>90</u>
<b>0</b>	425.65	425.65	425.65	425.65	425.65	425.65	425.65
<b>5</b>	421.98	422.16	422.00	422.36	422.22	421.97	424.27
<b>10</b>	413.71	413.94	414.10	414.02	414.28	414.33	415.74
<b>15</b>	400.88	401.02	400.78	401.25	401.07	401.26	403.37
<b>20</b>	383.04	383.61	383.24	383.75	383.79	383.81	385.01
<b>25</b>	361.13	360.87	361.45	361.76	361.86	362.43	363.60
<b>30</b>	335.95	335.48	335.49	336.09	336.15	336.10	337.89
<b>35</b>	306.66	305.91	306.98	306.80	307.62	307.80	308.74
<b>40</b>	274.81	274.69	275.46	275.65	275.86	275.81	277.29
<b>45</b>	241.04	241.09	241.87	242.14	242.30	242.88	243.96
<b>50</b>	205.33	206.16	206.19	206.29	207.18	207.60	208.09
<b>55</b>	169.85	169.74	170.40	170.71	171.05	171.43	172.42
<b>60</b>	134.54	135.09	135.13	135.21	136.01	136.28	136.10
<b>65</b>	101.64	102.17	101.87	102.59	102.52	102.75	103.27
<b>70</b>	71.46	72.00	71.90	71.87	72.18	72.61	72.37
<b>75</b>	44.91	44.96	44.89	45.21	45.09	45.35	45.48
<b>80</b>	22.32	22.35	22.33	22.69	22.46	22.60	22.88
<b>85</b>	6.50	6.62	6.57	6.57	6.59	6.61	6.57
<b>90</b>	0.38	0.41	0.40	0.44	0.40	0.41	0.53
<b>95</b>	0.40	0.41	0.41	0.42	0.40	0.42	0.45
<b>100</b>	0.45	0.43	0.43	0.45	0.44	0.45	0.46
<b>105</b>	0.45	0.47	0.46	0.46	0.46	0.46	0.43
<b>110</b>	0.48	0.48	0.48	0.46	0.49	0.50	0.48
<b>115</b>	0.48	0.48	0.50	0.49	0.48	0.50	0.48
<b>120</b>	0.52	0.52	0.51	0.52	0.50	0.53	0.53
<b>125</b>	0.55	0.53	0.55	0.55	0.53	0.55	0.55
<b>130</b>	0.60	0.57	0.60	0.58	0.58	0.59	0.60
<b>135</b>	0.55	0.55	0.56	0.54	0.55	0.52	0.53
<b>140</b>	0.60	0.62	0.59	0.59	0.60	0.60	0.62
<b>145</b>	0.72	0.74	0.76	0.75	0.72	0.73	0.77
<b>150</b>	0.91	0.92	0.92	0.92	0.92	0.93	0.93
<b>155</b>	1.13	1.15	1.14	1.16	1.15	1.16	1.17
<b>160</b>	1.46	1.45	1.44	1.45	1.45	1.45	1.48
<b>165</b>	1.75	1.76	1.74	1.74	1.75	1.77	1.77
<b>170</b>	1.96	1.95	1.98	1.97	1.95	1.96	1.99
<b>175</b>	2.10	2.09	2.09	2.08	2.08	2.09	2.10
<b>180</b>	2.18	2.18	2.18	2.18	2.18	2.18	2.18



**ZONAL LUMEN SUMMARY**

Zone	Lumens	%Lamp	%Fixt
0-30	319.63	31.5	31.5
0-40	511.56	50.4	50.4
0-60	850.97	83.8	83.8
0-90	1011.53	99.6	99.6
90-120	1.44	.1	.1
90-130	1.93	.2	.2
90-150	2.84	.3	.3
90-180	4.05	.4	.4
0-180	1015.58	100	100

Total Luminaire Efficiency = 100%

**ZONAL LUMEN SUMMARY**

Zone	Lumens
0-10	40.06
10-20	113.07
20-30	166.5
30-40	191.93
40-50	186.55
50-60	152.86
60-70	102.01
70-80	48.73
80-90	9.82
90-100	.46
100-110	.49
110-120	.49
120-130	.49
130-140	.44
140-150	.47
150-160	.54
160-170	.48
170-180	.2

Note: The luminaire was LED luminaire, the luminaire lumens was also considered as bare lamp lumens.



**COEFFICIENTS OF UTILIZATION - ZONAL CAVITY METHOD**

Effective Floor Cavity Reflectance 0.20

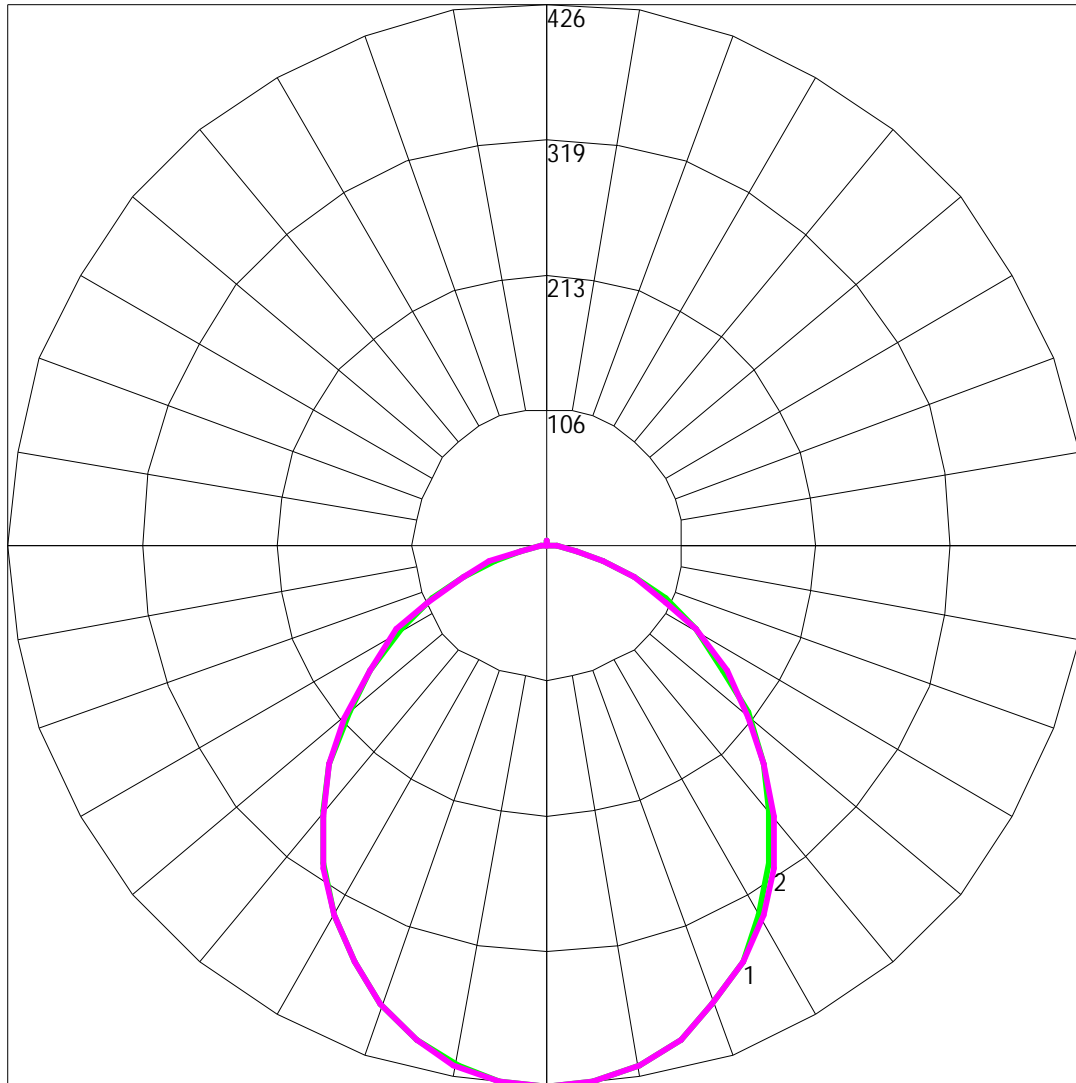
RC	80				70				50			30			10			0
	70	50	30	10	70	50	30	10	50	30	10	50	30	10	50	30	10	0
0	119	119	119	119	116	116	116	116	111	111	111	106	106	106	102	102	102	100
1	110	105	101	98	107	103	99	96	99	96	93	95	92	90	91	89	88	85
2	100	93	86	81	98	91	85	80	87	82	78	84	80	76	81	78	75	73
3	92	82	74	68	90	81	73	68	78	72	67	75	70	65	72	68	64	62
4	85	73	65	59	82	72	64	58	69	63	57	67	61	57	65	60	56	54
5	78	66	57	51	76	65	57	51	63	55	50	61	54	49	59	53	49	47
6	72	59	51	45	70	59	50	45	57	50	44	55	49	44	53	48	43	41
7	67	54	46	40	65	53	45	40	52	45	39	50	44	39	49	43	39	37
8	63	50	41	36	61	49	41	36	47	40	35	46	40	35	45	39	35	33
9	59	46	38	32	57	45	37	32	44	37	32	43	36	32	42	36	32	30
10	55	42	34	29	54	42	34	29	41	34	29	40	33	29	39	33	29	27

Note: The luminaire was LED luminaire, the luminaire lumens was also considered as bare lamp lumens.



LCTECH

POLAR GRAPH



Maximum Candela = 425.65 Located At Horizontal Angle = 0, Vertical Angle = 0

# 1 - Vertical Plane Through Horizontal Angles (0 - 180)

# 2 - Vertical Plane Through Horizontal Angles (90 - 270)

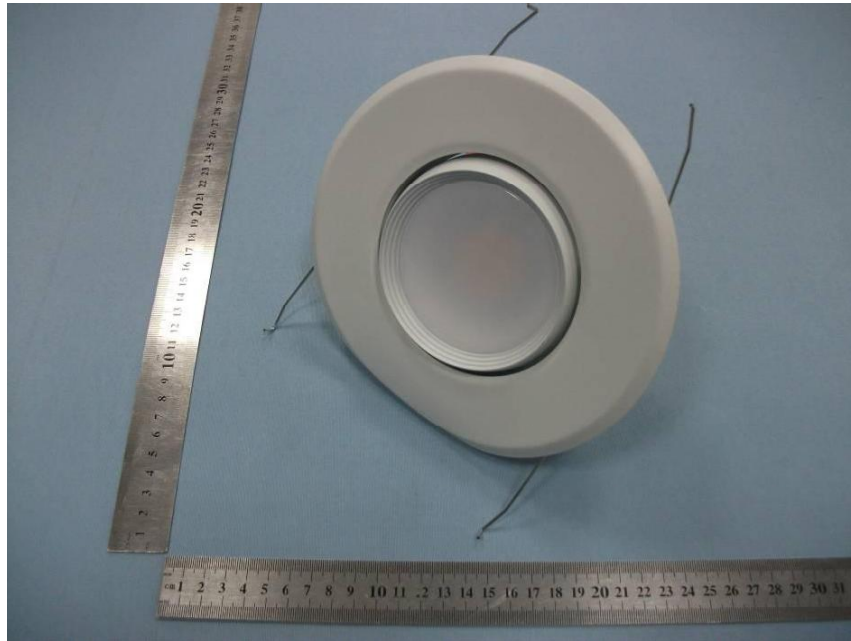
LCTECH (Zhongshan) Testing Service Co., Ltd.

Add: 2/F., Technology and Enterprise Development

Center, Guangyuan Road, Xiaolan, Zhongshan, Guangdong, China

Tel: +86-760-22833366 Fax: +86-760-22833399 E-mail: [Service@lccert.com](mailto:Service@lccert.com) <http://www.lccert.com>

Photo of sample



Picture 1 Front View



Picture 2 Back View

--End of test report--